

SEPTEMBER 2022 | ISSUE 9



ENGAGE

Go beyond to lead people of a hurting world into new life through Jesus Christ.

Greetings from Pastor Bee

Dear Colonial Park Family,

Music is very important to me, and I like most kinds of music. Growing up we were a singing family. Whenever we were on the road, we would sing - mostly hymns, but also other songs. We sang our table prayers. We would sing in harmony with my dad singing bass, my mom and sister singing the melody, and I would sing alto. At one time when my dad served a small congregation, he organized our family to have a Christmas concert with just the four of us. In between the songs, my mom would read stories and we had congregational singing as well. We did this several years in a row, and it was great. I sang in school choirs and as teenagers, my sister and I helped start a Gospel choir that today counts over 100 members. I listen to music all the time - when I am celebrating or just in a good mood, when I'm out walking, when I cook or clean the house. I listen to music when I am sad and there are hymns and songs I listen to help me grieve.

But when my friend was recently killed, I could not listen to music. I tried to listen to the music that usually helps me meditate, helps me cry, or lifts me up. But no matter what I tried, I could not find joy in music and that was painful. It wasn't until we sang the second verse of "Holy, Holy, Holy" in the 9am worship service that I realized my friend has now become one of the saints:

Continued on next page...

THIS MONTH'S FEATURED ARTICLES

Greetings from Pastor Bee
Be K.I.N.D.



Greetings from Pastor Bee continued

Holy, holy, holy

All the saints adore Thee

Casting down their golden crowns around the glassy sea

All the cherubim and seraphim are falling down before Thee

Which wert and art and evermore shalt be

Holy, holy, holy

Though the darkness hide Thee

Though the eyes of sinful man Thy glory may not see

Lord, only Thou art holy and there is none beside Thee

Perfect in power, in love and purity

Normally, I think of the saints that have gone before me, but that day it hit me: Autura is now a saint. I could not sing the rest of the hymn but as I listened to you all sing, the words of verse three lifted me up because God is holy. There is none beside Him, perfect in power, in love and purity. It was truly beautiful to just listen to your voices carry me through a rough time in worship.

The same day, at 11am in the Gathering, we started out with singing "All the People say Amen". The first verse says:

You are not alone if you are lonely

When you're feeling frail, you're not the only one

We are all the same in need of mercy

To be forgiven and be free

It's all you got to lean on

But thank God, it's all you need

And all the people said Amen, whoa, oh-oh

And all the people said Amen

Give thanks to the Lord, for his love never ends

And all the people said Amen

That was assurance I needed. Because it is God's love that will carry us on in difficult times of life, It is God's love that will guide us through sadness, anger and frustration. Most of us have times when we doubt God's presence in our life situations. It can be hard to believe God can be present in the midst of hurt, confusion, tension, and frustrations, but where do we think God can not be present? In the crowded city, in our busyness, in our loneliness, in our grief, in our heartaches, and struggles? If we stop and remember that we believe in God the creator and that we live in God's world, we can never, never, ever go anywhere where God is not. God is breathing strength and goodness and love into our spirits. When we remember that, we can approach life with more hope and courage. And we will know each day that God is with us and we are not alone. Then we again will be able to draw comfort and joy from music, hymns and songs.

God's Grace & Peace,

Pastor Bee

OUTREACH MINISTRIES

WHAT OUTREACH MEANS TO ME

I want to share what outreach means to me and how I got here. I have two things I look at when thinking about outreach: Loving your neighbors and making disciples that make disciples. Nothing new there, right? It worked for Jesus, and He didn't suggest we try it. Actually, He commanded we do it.

Jesus didn't tell folks to come on up to the Temple and they could talk there. No, He went to where the people were! And what did most of these people look like - the beaten down, poor, sick and worse. I would say Jesus probably spent most of His time with folks we try to avoid like the plague. Why did He choose these folks? Well, he chose them because they needed His love, empathy, kindness, compassion, healing, friendship and more.

There are so many folks that need to feel the Love of Jesus and know they matter and aren't forgotten. I think we all need to spread the Word and the Love of Christ in this broken world we live in. We aren't of this world - we are just temporarily living here trying to make disciples that make disciples. By doing this we will make this broken world a better place for our brothers and sisters.

We sometimes get caught up in the number of people that attend CPUMC. I don't think Jesus counts attendance, but I do think He counts the number of people CPUMC attends to. Churches don't make disciples, but disciples make churches. This is one reason we make disciples that make disciples. It's worked for 1000s of years and the blueprint was given to us by Jesus himself. Jesus came to serve not to be served and He commands us to do the same.

DISCIPLESHIP MINISTRIES

BE K.I.N.D.

Think back on your first visit to Colonial Park, what encouraged you to return? What kept you coming back time-and-time again?

Seven minutes is all you get to make a positive first impression. In the first seven minutes of contact with your church, your first-time guests will decide whether they are coming back. That's before a single worship song is sung and before a single word of the message is uttered. - Fusion by Nelson Searcy

As representatives of Christ and the faces of Colonial Park, we all play an important part in welcoming guests. So that we're all on the same page, I created an easy and memorable tool to help in welcoming guests - Be K.I.N.D.

K - keep your eyes open for new and returning faces

- See a new face? Smile. Make eye contact. Be inviting. Show them the ministry wall or sit by them in worship.

I - introduce yourself and initiate conversation

- Be sure to wear a name tag and introduce guests to other worship attendees.
- If this were your home, how would you welcome them?

N - never underestimate the power of good conversation

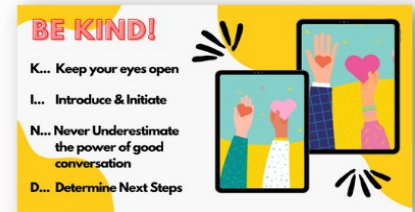
- Ask questions, listen, be personable - show guests that you genuinely value their presence.
- Seek out some common ground - team logo on a shirt? Have children the same age as yours?

D - determine what to invite them to next

- Food Truck Night coming up? Invite them and share your number. Eat together!
- Children's event coming up? Introduce them to Tommye and share why you're excited about the event.

Each of you are equipped to welcome our neighbors. If you're eager to make new friends - welcome at the front door. If you're shy - seek out new faces that may appear timid or shy. Serve as an example that no matter who they are, they are welcomed at Colonial Park.

If you are interested in sharing the love of Jesus, please contact Megan Warren at mwarren@colonialpark.org. Come be a part of making the first 7-minutes matter to someone seeking Jesus.



FAMILY MINISTRIES

BACK TO SCHOOL BASH - A RECAP

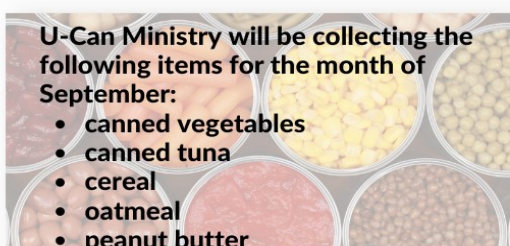
School has started, families are finding a new routine, and Colonial Park wrapped up another Back to School Bash.

As you are reading this, it has been a month since we wrapped up our Back to School Bash, but I would love to give you some information about how special it was.....

This year we, of course, had bounce houses, crafts, and treat bags, but let me tell you about how our volunteers interacted with each family to help them all feel special and loved. On our bounce houses, our volunteers didn't just talk to the kids, but they really took the time to get to know everyone who visited their station, they came up with relay races (that included cool nicknames that the kids came up with), and even slid down the slides with kids who were feeling a little scared. Our craft tables were filled with giggles and conversations. Our expert craftspeople embodied Jesus's love by taking time with each craft, getting to know the families, and even giving them examples of how to show Jesus's love to others. And lastly, the treat bags. As we did at the Easter Festival, some volunteers walked around and personally handed out treat bags to every family that walked onto our lawn. Not only that, but they took time to pray with everyone they spoke with. They prayed for the school year or anything else that family might have requested.

To observe this year's Back to School Bash was to truly see how we as a church are being the hands and feet of Jesus and pouring love and support into the community.

A big THANKS to everyone who attended our festival and to everyone who volunteered.



Mark Your Calendars!

9/1: Mobile Food Distribution
9/1: COVID Shot Clinic
9/5: Labor Day - OFFICE CLOSED
9/8: J.O.Y. Luncheon with Pastor Bee
9/10: Men's Breakfast
9/15: Mobile Food Pantry Distribution



5330 Park Avenue, Memphis, TN 38119

ELECTRONIC SERVICE REQUESTED

Non-Profit
Organization

U.S. POSTAGE

PAID

Memphis, TN

Permit No. 671

Join us Sundays for In-Person Worship at 9:00 am for Traditional Worship, 10:00 am for Sunday School and 11:00 am for Casual Worship. Not ready to be in-person yet? Catch us on Facebook or YouTube at 11:00 am @Colonial Park UMC. Or you may call the worship service hotline at 901-329-6527 to listen from your phone.

Senior Pastor: Rev. Dr. Birgitte T. French	pastorbee@colonialpark.org
Dir. of Music: Kendrick Little	klittle@colonialpark.org
Dir. of Discipling Ministries: Megan Warren	mwarren@colonialpark.org
Dir. of Family Discipleship Ministries: Tommye Windsor-Cummings	twindsor@colonialpark.org
Dir. of Outreach: Gary Vaughn	gwvaughn@colonialpark.org
Financial/Membership Staff: Charlotte Martin	cmartin@colonialpark.org
Ministry Assistant: Amy Emerson	aemerson@colonialpark.org



Scan the QR code with your smartphone to go directly to Easy Tithe. This is an easy way to remain faithful to the ministries of Colonial Park.

This is a newsletter of Colonial Park United Methodist Church. The newsletter is published monthly & mailed third class, and e-mailed weekly except holidays.

Phone: (901) 683-5286 · E-mail: info@colonialpark.org · www.colonialpark.org · Office Hours: M-F 9:00 am—1:00 pm